

To MOTOR CIRCUIT(CN3B) on page 42

- LED
- BIAS-L
- +BI(REC)
- BIAS-R
- R.OUT-R
- R.OUT-L
- BIAS-B
- BIAS-B
- AGND
- +B
- B
- P.IN-L
- P.IN-L
- SENS
- MGND
- CM
- RMF
- RMR
- SOL
- AD2
- RPT
- AD1
- VREFSV
- RPS
- DGND

A B C D A B C D

IC2
AN7356SC-E2
PLAYBACK/REC AMP

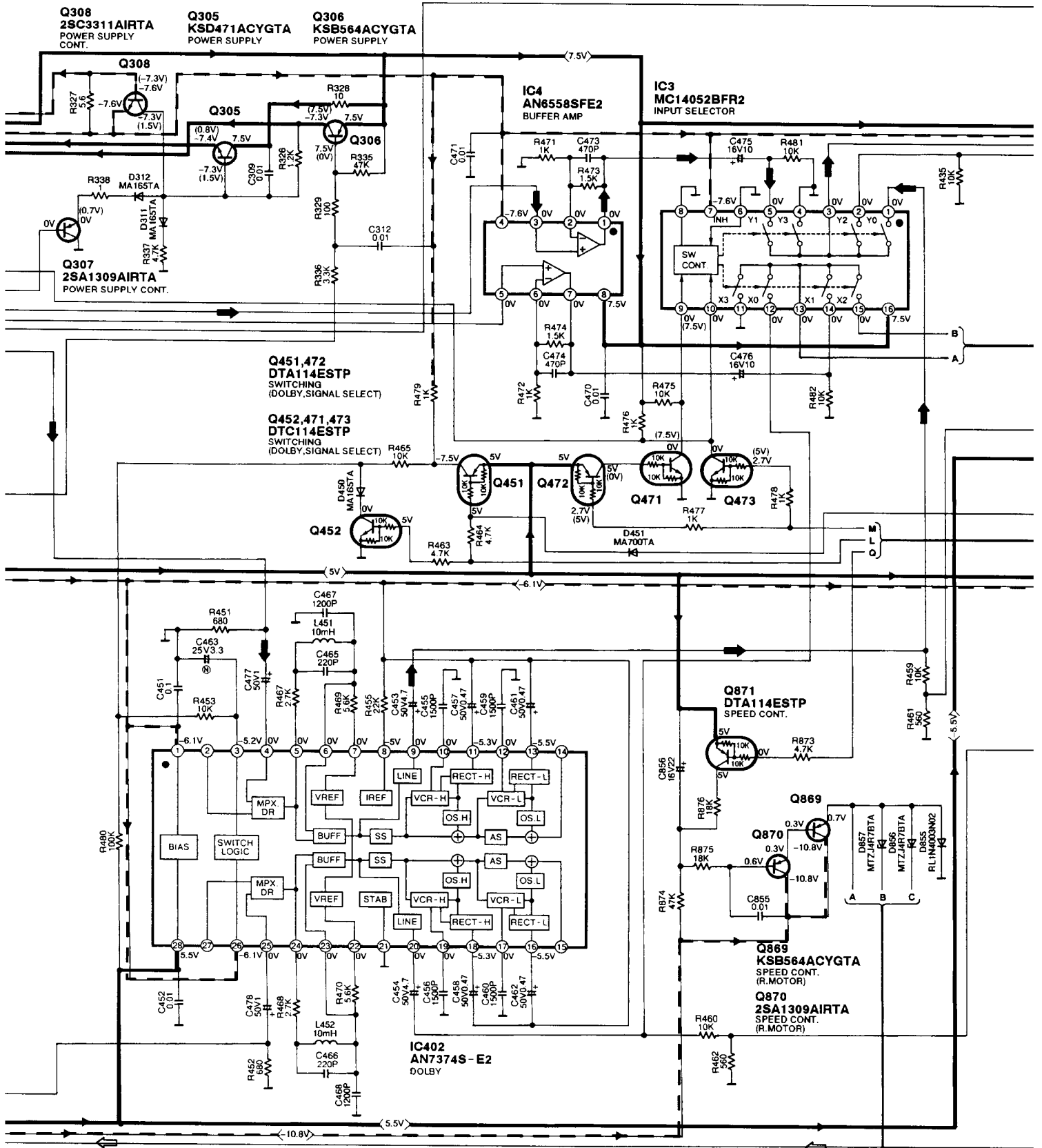
Q56
DTC114ESTP
PLAY EO

Q57
DTA114ESTP
REC EO

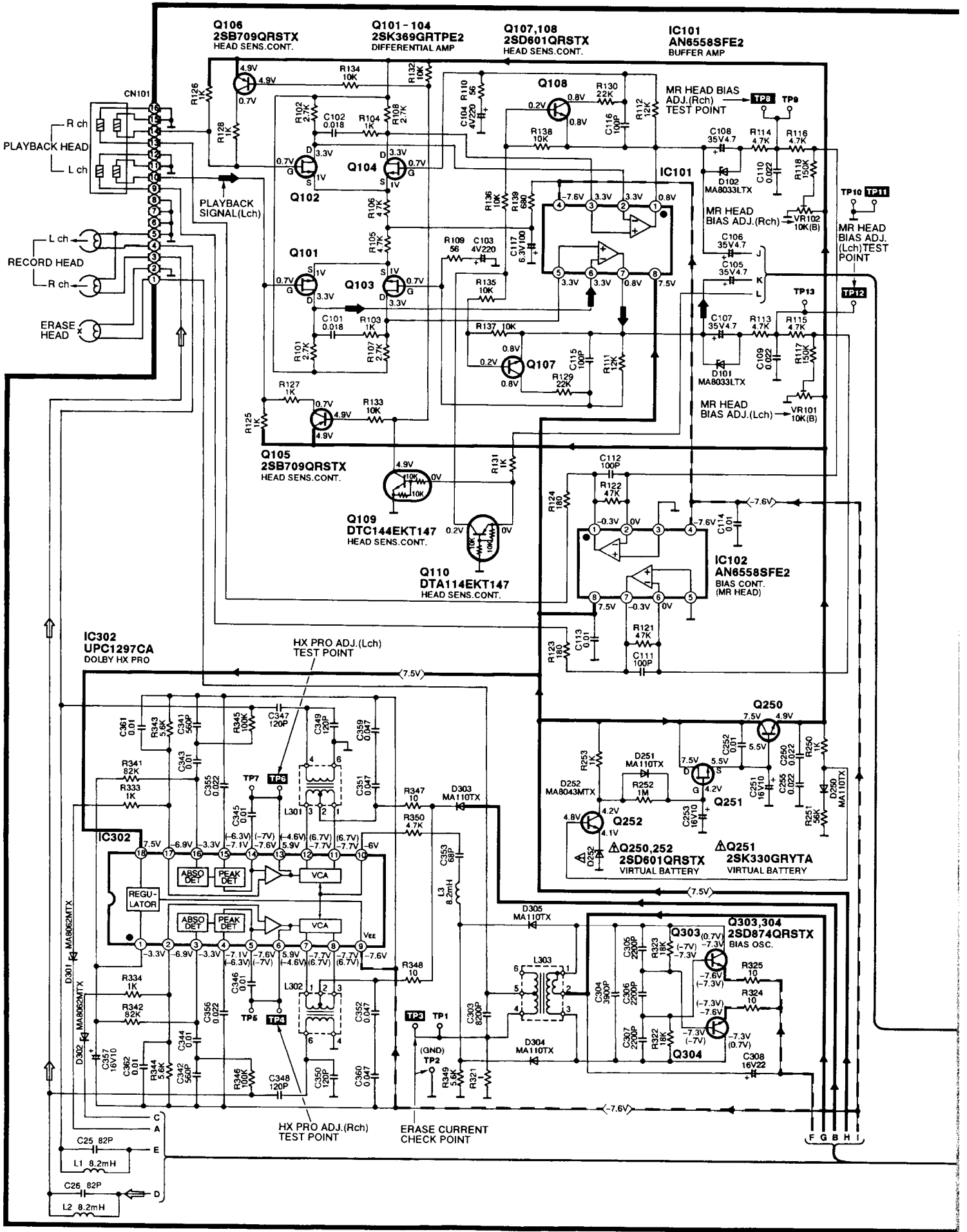
Q51-55
DTC114ESTP
R/P EO



A MAIN CIRCUIT (P.C.Board: on page 46)

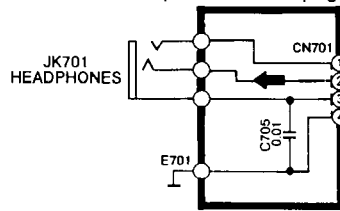


C MOTOR CIRCUIT (P.C.Board: on page 44)

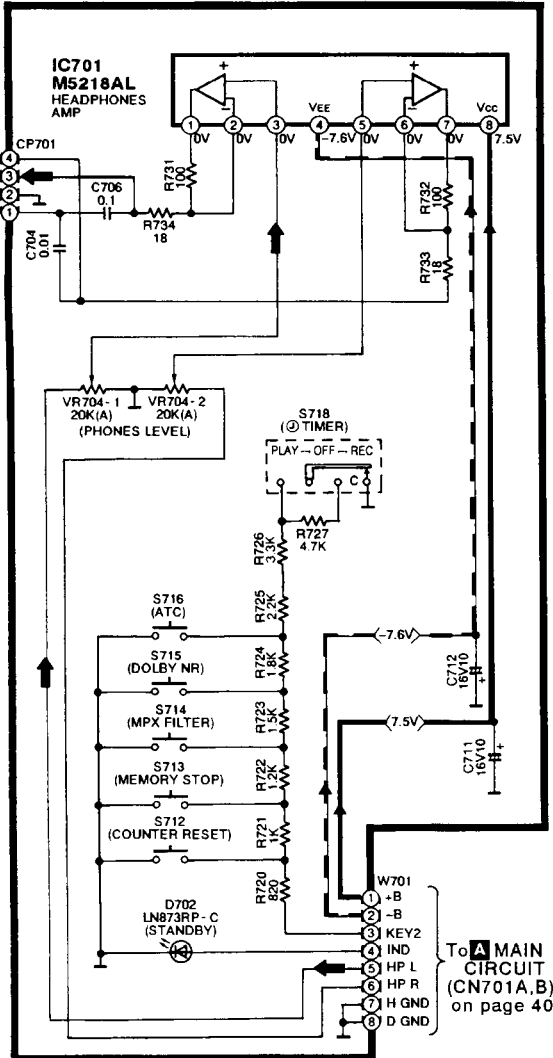
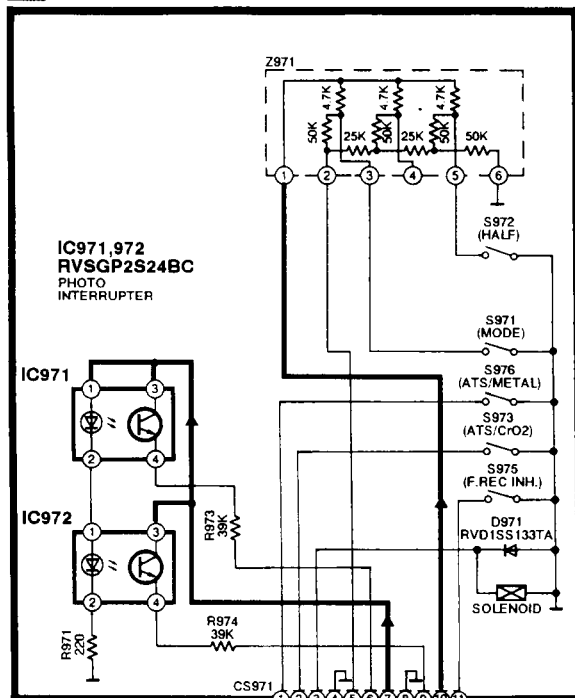


F OPERATION CIRCUIT (P.C.Board: on page 45)

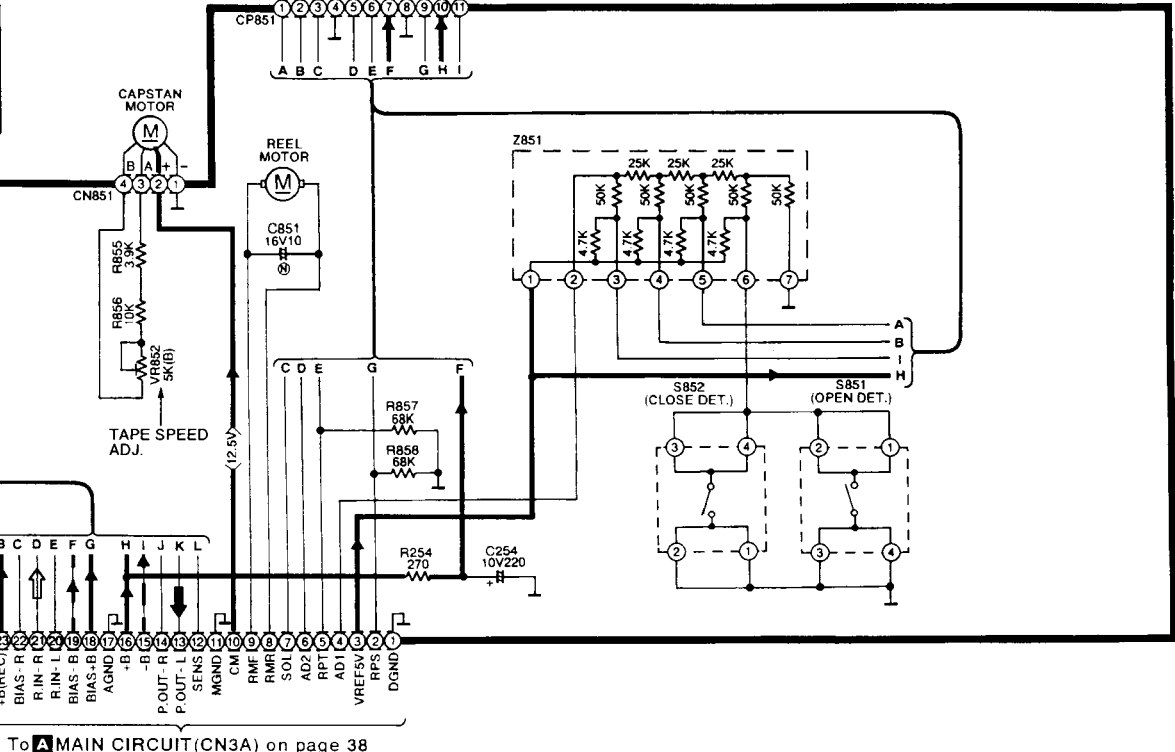
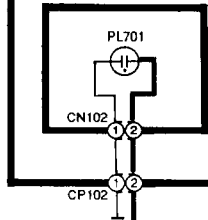
E HEADPHONES JACK CIRCUIT (P.C.Board: on page 45)



D MECHANISM CIRCUIT (P.C.Board: on page 44)



G LAMP CIRCUIT (P.C.Board: on page 45)



To **A** MAIN CIRCUIT (CN3A) on page 38



H FL CIRCUIT (P.C.Board: on page 45)

